



SAINT PETERSBURG CITY COUNCIL

Meeting of July 23, 2009

TO: THE HONORABLE JEFF DANNER, CHAIR, AND MEMBERS OF CITY COUNCIL

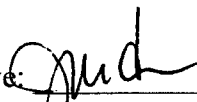

SUBJECT: Resolution approving the plat of TACRA Phase III, generally located on the southern side of 18th Avenue South, between 21st and 22nd Streets South (City File: 08-20000007).

RECOMMENDATION: The Administration recommends **APPROVAL**.

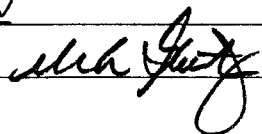
DISCUSSION: The applicant is requesting approval of a replat consolidating 24 smaller lots, together with various rights-of-way previously approved for vacation by the City Council in September of 2006 via City Ordinance 965-V (City File 06-33000020). The replat is necessary to comply with the conditions of the right-of-way vacations. Approval of this replat will consolidate the land for redevelopment and allow the City to proceed with implementation of the TACRA Redevelopment Plan.

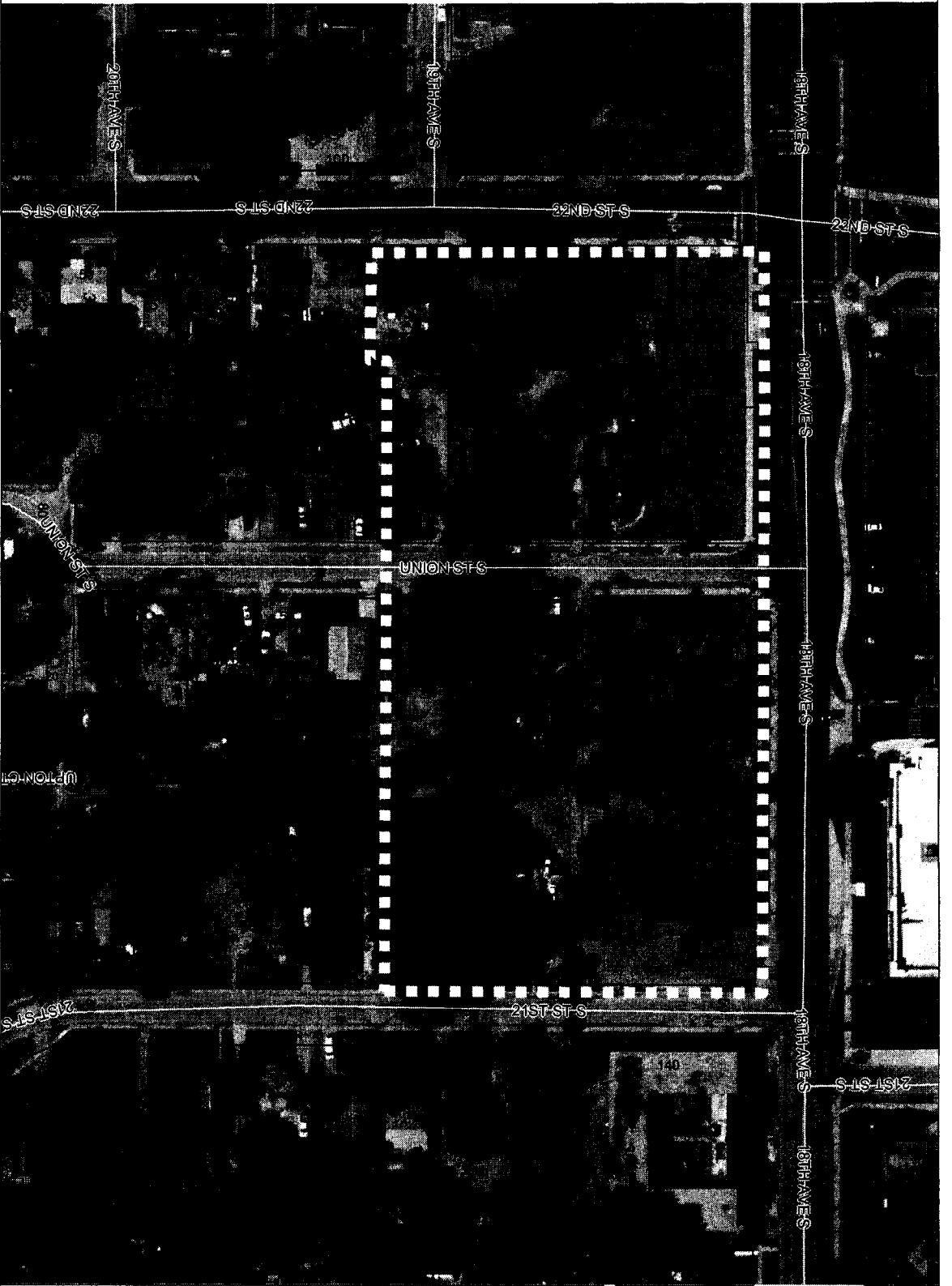
Attachments: Map, Aerial, Resolution

APPROVALS:

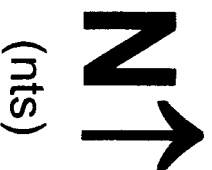
Administrative:  

Budget: NA

Legal: 



Development Services Department
Case No.: 08-20000007
TACRA Phase III



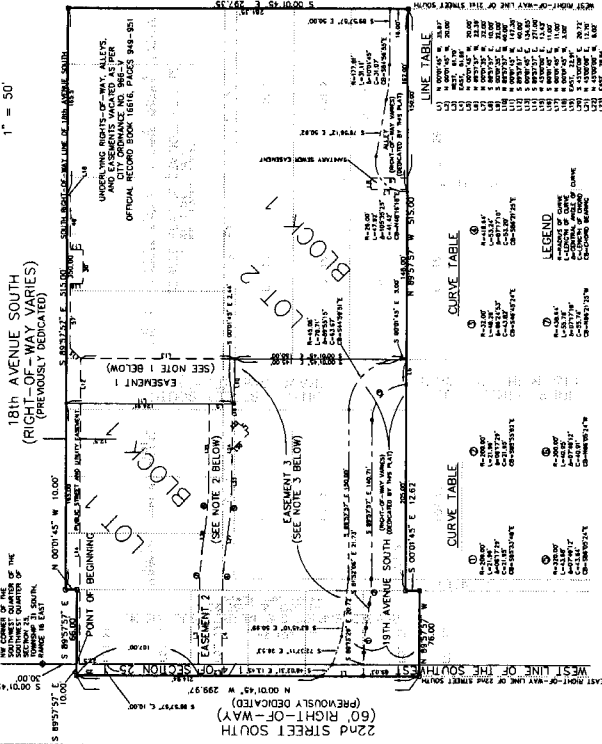
TACRA PHASE III

BEING A REPLAT OF LOTS 7-9, 15-17, 26-28, THE REMAINDERS OF LOTS 1-6 AND 23-25, REVISED PLAT OF SEMINOLE HEIGHTS, AS RECORDED IN PLAT BOOK 1, PAGE 24, OF THE PUBLIC RECORDS OF PINELLAS COUNTY, FLORIDA; TOGETHER WITH LOTS 21-26, REVISED MAP OF G.W. MEARE'S SUBDIVISION, AS RECORDED IN PLAT BOOK 8, PAGE 22, OF THE PUBLIC RECORDS OF PINELLAS COUNTY, FLORIDA; TOGETHER WITH VACATED RIGHTS-OF-WAY, IN THE SOUTHWEST 1/4 OF SECTION 25, TOWNSHIP 31 SOUTH, RANGE 16 EAST, AND THE SOUTHEAST 1/4 OF SECTION 26, TOWNSHIP 31 SOUTH, RANGE 16 EAST, CITY OF ST. PETERSBURG, PINELLAS COUNTY, FLORIDA.

NOTES:

- 1) Basis of Bearings: S00°01'45"E along the West line of the Southwest 1/4 of Section 25.
- 2) Denotes set 6" x 6" Concrete Monument (City of St. Petersburg).
- 3) Denotes set 5/8" Copied Iron Rod (City of St. Petersburg).
- 4) Denotes set 7/8" Iron & Steel (City of St. Petersburg).

POINT OF COMMENCEMENT
SOUTHWEST CORNER OF THE
SECTION 25, SOUTH
TOWNSHIP 31 SOUTH,
RANGE 16 EAST



DESCRIPTION:

Commencing at the Northwest corner of the Southwest 1/4 of the Southwest 1/4 of Section 25, Township 31 South, Range 16 East; thence S00°01'45"E a distance of 10.00 feet to a set 6" x 6" concrete monument on the West boundary line of the Revised Plat of Seminole Heights, as recorded in Plat Book 1, Page 24, of the Public Records of Pinellas County, Florida, which is the South right-of-way line of 18th Avenue South, for a Point of Beginning; thence S00°01'45"E a distance of 10.00 feet to a set 6" x 6" concrete monument on the West boundary line of the Revised Plat of Seminole Heights, a distance of 10.00 feet to a set P.K. nail and cap, thence S 89°57'57" E, coincident with the South right-of-way line of 18th Avenue South, a distance of 512.00 feet to the Northwest corner of Lot 1; thence S 89°57'57" E, coincident with the South right-of-way line of 18th Avenue South, a distance of 297.35 feet to a set concrete monument for the Southwest corner of this tract; thence S 89°57'57" E, coincident with the West right-of-way line of 21st Street South, a distance of 10.00 feet to a set concrete monument on the West right-of-way line of a 10-foot alley and the East boundary line of Lot 1; thence S 89°57'57" E, coincident with the West right-of-way line of a 10-foot alley and the East boundary line of Lot 1, a distance of 10.00 feet to a set concrete monument for the Southwest corner of this tract; thence S 89°57'57" E, coincident with the North line of Lot 2, a distance of 10.00 feet to the Northeast corner of Lot 2; thence S 89°57'57" E, coincident with the South right-of-way of said 18th Avenue South a distance of 10.00 feet to the Point of Beginning.

NOTES:

- 1) As recorded in its graphic form, the official depiction of the subdivided lands described herein and all in no circumstances be interpreted in authority by any other graphic or other means. There may be additional restrictions that are not recorded in this plat that may be found in the public records of this county. The plat is intended to be used for construction, subdivision, maintenance, or operation of cable television service and all other public utility in the event of a conflict between the plat and the public records of this county, the plat shall prevail.
- 2) Easement 1 is a private non-accrual ingress-egress easement for the benefit of Lot 1. Lot 1 reserves the right to use Easement 1 as a private non-accrual ingress-egress easement for the benefit of Lot 1.
- 3) Easement 2 is a private non-accrual ingress-egress easement for the benefit of Lot 2. Lot 1 reserves the right to use Easement 2 as a private non-accrual ingress-egress easement for the benefit of Lot 2.
- 4) Easement 3 is a private non-accrual ingress-egress easement for the benefit of Lot 3. Lot 1 reserves the right to use Easement 3 as a private non-accrual ingress-egress easement for the benefit of Lot 3.

RECORDATION:
This instrument hereby certifies that it is the Owner of the herein described tract of land hereby defined as TACRA PHASE III, and that it dedicates to the public all streets, ways, easements, rights-of-way and public areas shown on this plat of the subdivision of land in
CITY OF ST. PETERSBURG, FLORIDA
A Municipal Corporation

Mayor and delivered in the presence of:
Witness:
STATE OF FLORIDA
COUNTY OF PINELLAS

The foregoing instrument was acknowledged before me this day of _____, 2008, by Rick Baker, Mayor of the City of St. Petersburg, Florida, a Municipal Corporation, on behalf of the Corporation, who is personally known to me.

My Commission Expires: _____
NOTARY PUBLIC, State of Florida at Large

CERTIFICATE OF APPROVAL BY THE CITY OF ST. PETERSBURG:
APPROVED by the City of St. Petersburg, Pinellas County, Florida, this day of _____, 2008, provided that this plat has been filed for record in the Office of the Clerk of the Circuit Court of Pinellas County, Florida, within six (6) months from the date of this approval.

APPROVED by the City Council of the City of St. Petersburg, Pinellas County, Florida, this day of _____, 2008.
MAYOR

CERTIFICATE OF APPROVAL BY THE COUNTY CLERK:
STATE OF FLORIDA
COUNTY OF PINELLAS

I, _____, Clerk of the Circuit Court of Pinellas County, Florida, hereby certify that this plat has been approved and that this plat has been filed for record in the Office of the Clerk of the Circuit Court of Pinellas County, Florida, on this day of _____, 2008, at _____, Florida. Public Records of Pinellas County, Florida.

By: _____, Deputy Clerk
Ken Burns, Clerk of the Circuit Court
Pinellas County, Florida

CERTIFICATE OF CONFORMITY:
Reviewed for conformity with Chapter 177, Part 1, Florida Statutes by a Professional Surveyor and Mapper under contract with the City of St. Petersburg.

City of St. Petersburg
Professional Surveyor and Mapper #257
George F. Young, Inc.
(Licensed Business #21)

SURVEYOR'S CERTIFICATE:

I, _____, Professional Surveyor, do hereby certify that this plat was prepared under my direction and supervision and to the best of my knowledge and belief, the plat complies with all of the requirements of Chapter 177, Part 1, Florida Statutes.

The property corners were set on June 26, 2008.

James R. Robert
Florida Professional Surveyor & Mapper #6502

CITY OF ST. PETERSBURG
SURVEY DEPARTMENT
1744 9th STREET NORTH
ST. PETERSBURG, FLORIDA 33713
727-892-5346