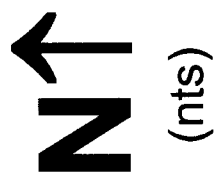
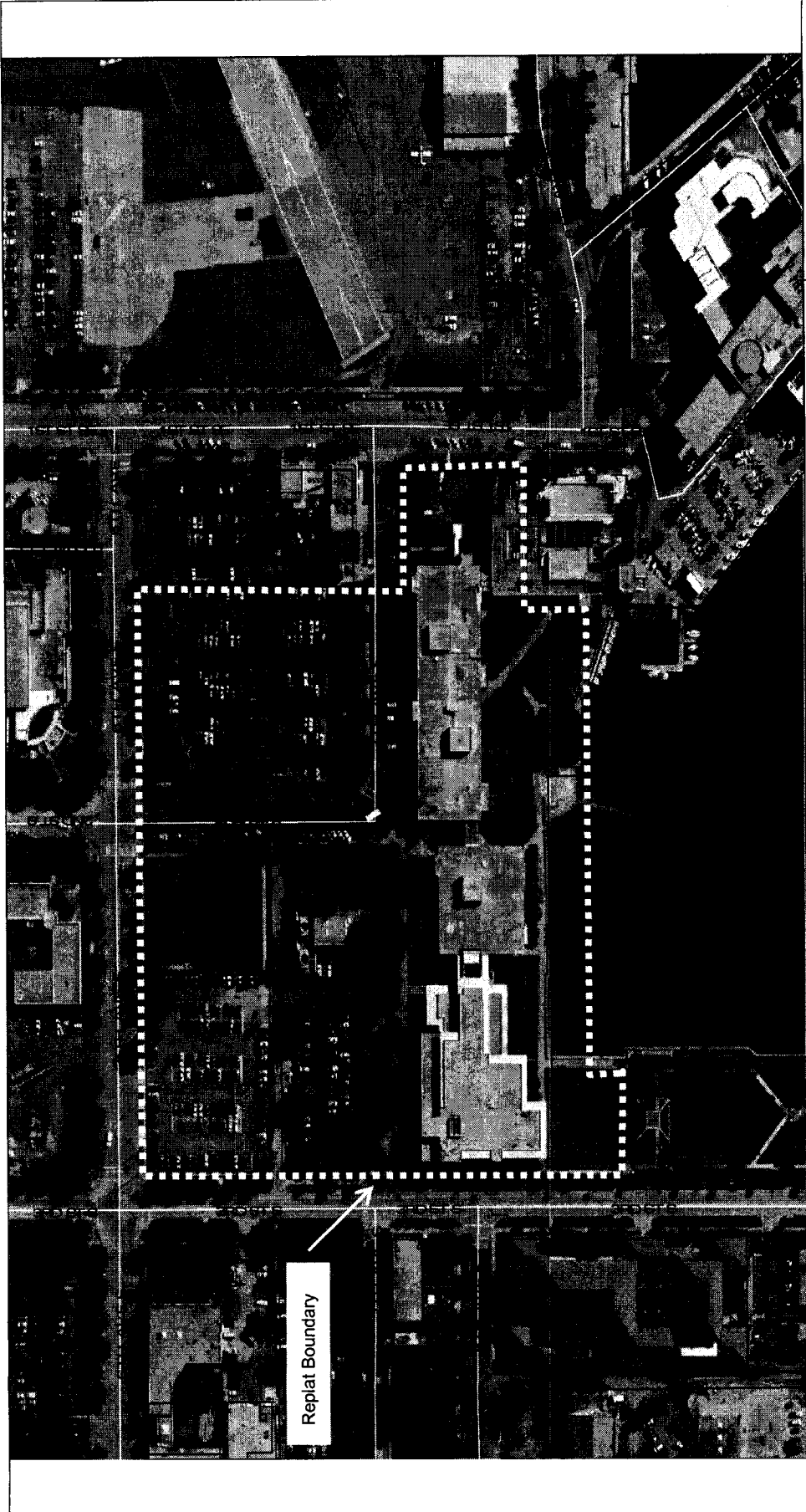


Development Services Department
 Case No.: 09-20000002
 Address: 250 6th Avenue South





Replat Boundary



Development Services Department
Case No.: 09-20000002
Address: 250 6th Avenue South



U.S.F. REPLAT NO. 4

BEING A REPLAT OF LOT 1, BLOCK 1, U.S.F. REPLAT, AS RECORDED IN PLAT BOOK 79, PAGE 83, PUBLIC RECORDS OF PINELLAS COUNTY, FLORIDA, TOGETHER WITH LOTS 4 THROUGH 8 INCLUSIVE, BLOCK 95, REVISED MAP OF THE CITY OF ST. PETERSBURG, AS RECORDED IN PLAT BOOK 1, PAGE 49, PUBLIC RECORDS OF HILLSBOROUGH COUNTY, FLORIDA OF WHICH PINELLAS COUNTY, FLORIDA WAS FORMERLY A PART, TOGETHER WITH VACATED RIGHT-OF-WAY, IN THE SOUTHEAST 1/4 OF SECTION 19, TOWNSHIP 31 SOUTH, RANGE 17 EAST, AND THE NORTHEAST 1/4 OF SECTION 30, TOWNSHIP 31 SOUTH, RANGE 17 EAST, CITY OF ST. PETERSBURG, PINELLAS COUNTY, FLORIDA.

LEGAL DESCRIPTION:

From the Northwest corner of Lot 8, Block 95, REVISED MAP OF THE CITY OF ST. PETERSBURG, as recorded in Plat Book 1, Page 49, Public Records of Hillsborough County, Florida of which Pinellas County was formerly a part, as the POINT OF BEGINNING, said point also being the intersection of the East right-of-way line of 3rd Street South and the South right-of-way line of 6th Avenue South, thence North 89°57'45" East along the South right-of-way line of 6th Avenue South, said line also being the North line of Lots 4 through 8, Block 95 of said REVISED MAP OF THE CITY OF ST. PETERSBURG and the North line of Lot 1, U.S.F. REPLAT, as recorded in Plat Book 79, Page 83, Public Records of Pinellas County, Florida, 750.46 feet to the Northeast corner of said Lot 1; thence along the boundary of said Lot 1, the following eight (8) courses and distances:

- 1) South, 423.62 feet,
- 2) North 89°57'57" East, 159.97 feet,
- 3) South, 200.32 feet,
- 4) South 89°57'34" West, 181.81 feet,
- 5) South 00°01'06" East, 100.00 feet,
- 6) South 89°57'57" West, 150.00 feet,
- 7) North 00°29'28" East, 50.00 feet,
- 8) South 89°58'45" West, 150.00 feet

to the aforesaid East right of way line of 3rd Street South; thence North 00°02'26" West, 775.52 feet to the POINT OF BEGINNING.

DEDICATION:

The undersigned hereby certifies that it is the owner of the herein described tract of land hereby platted as U.S.F. REPLAT NO. 4, and that it dedicates to the public all streets, alleys, public easements, rights of way, and public areas shown on this plat of the subdivision of said lands.

Owner name: University of South Florida, St. Petersburg

Authorized Agent: James Grant

Signed and delivered in the presence of:

Witness _____

(Print Name)

ACKNOWLEDGMENT:

STATE OF FLORIDA
COUNTY OF PINELLAS

The foregoing instrument was acknowledged before me this _____ day of _____ A.D., 2009, by James Grant,

Authorized Agent for the University of South Florida, St. Petersburg. He is personally known to me or has produced

_____ as identification.

My commission expires: _____ NOTARY PUBLIC, State of Florida at Largo

NOTICE: This plat, as recorded in its graphic form, is the official depiction of the subdivided lands described herein and will in no circumstances be supplanted in authority by any other graphic or digital form of the plat. There may be additional restrictions that are not recorded on this plat that may be found in the public records of this county.

The public utility easement dedicated hereon shall also be an easement for the construction, installation, maintenance and operation of cable television services; provided, however, no such construction, installation, maintenance and operation of cable television services shall interfere with the facilities and services of an electric, telephone, gas, or other public utility. The utility shall be responsible for the design, construction, installation, maintenance and operation of the facilities of such public utility. The utility shall be exempt to those private easements granted or reserved to the public utility, telephone services, telephony services, or other public utility. Such construction, installation, maintenance, and operation shall comply with the National Electrical Safety Code as adopted by the Florida Public Service Commission.

George F. Young, Inc. LB 051
250 Dr. Martin Luther King Jr. Street North
St. Petersburg, Florida 33701
(727) 822-8117



CERTIFICATE OF APPROVAL BY THE CITY OF ST. PETERSBURG:

APPROVED by the City of St. Petersburg, Pinellas County, Florida, this _____ day of _____ A.D., 2009, provided that this plat has been filed for record in the office of the Clerk of the Circuit Court of Pinellas County, Florida, within six (6) months from the date of this approval.

MAYOR _____

APPROVED by the City Council of the City of St. Petersburg, Pinellas County, Florida, this _____ day of _____ A.D., 2009.

CHARMAN _____

CERTIFICATE OF APPROVAL BY COUNTY CLERK:

STATE OF FLORIDA
COUNTY OF PINELLAS

I, Ken Burke, Clerk of the Circuit Court of Pinellas County, Florida, hereby certify that this plat has been examined and that it complies in form with all the requirements of the Statutes of Florida pertaining to maps and plats and that this plat has been filed for record in

Plat Book _____ Pages _____, Public Records of Pinellas County, Florida.

Signed on this _____ day of _____ A.D., 2009, at _____

By: _____ Ken Burke, Clerk,
Deputy Clerk Pinellas County, Florida

CERTIFICATE OF CONFORMITY:

Reviewed for conformity to Chapter 177, Part I, Florida Statutes by a Professional Surveyor and Mapper under contract or employed by the City of St. Petersburg.

Date: _____

Matthew D. Pickett
Florida Professional Surveyor & Mapper No. 6125

SURVEYOR'S CERTIFICATE:

I, Catherine A. Pollak, of George F. Young, Inc., the Surveyor making this plat, do hereby certify that this plat was prepared under my direction and supervision and to the best of my knowledge and belief that this plat complies with all the survey requirements of Part I, Chapter 177, Florida Statutes.

Plat boundary surveyed on the 22nd day of December, A.D., 2008.

GEORGE F. YOUNG, INC. LB 021
250 Dr. Martin Luther King Jr. Street North
St. Petersburg, FL 33701
(727) 822-4317

Catherine A. Pollak
Florida Professional Surveyor & Mapper
LS 6257

U.S.F. REPLAT NO. 4

BEING A REPLAT OF LOT 1, BLOCK 1, U.S.F. REPLAT, AS RECORDED IN PLAT BOOK 79, PAGE 83, PUBLIC RECORDS OF PINELLAS COUNTY, FLORIDA, TOGETHER WITH LOTS 4 THROUGH 8 INCLUSIVE, BLOCK 95, REVISED MAP OF THE CITY OF ST. PETERSBURG, AS RECORDED IN PLAT BOOK 1, PAGE 49, PUBLIC RECORDS OF HILLSBOROUGH COUNTY, FLORIDA OF WHICH PINELLAS COUNTY, FLORIDA WAS FORMERLY A PART, TOGETHER WITH VACATED RIGHT-OF-WAY, IN THE SOUTH-EAST 1/4 OF SECTION 19, TOWNSHIP 31 SOUTH, RANGE 17 EAST, AND THE NORTHEAST 1/4 OF SECTION 30, TOWNSHIP 31 SOUTH, RANGE 17 EAST, CITY OF ST. PETERSBURG, PINELLAS COUNTY, FLORIDA.

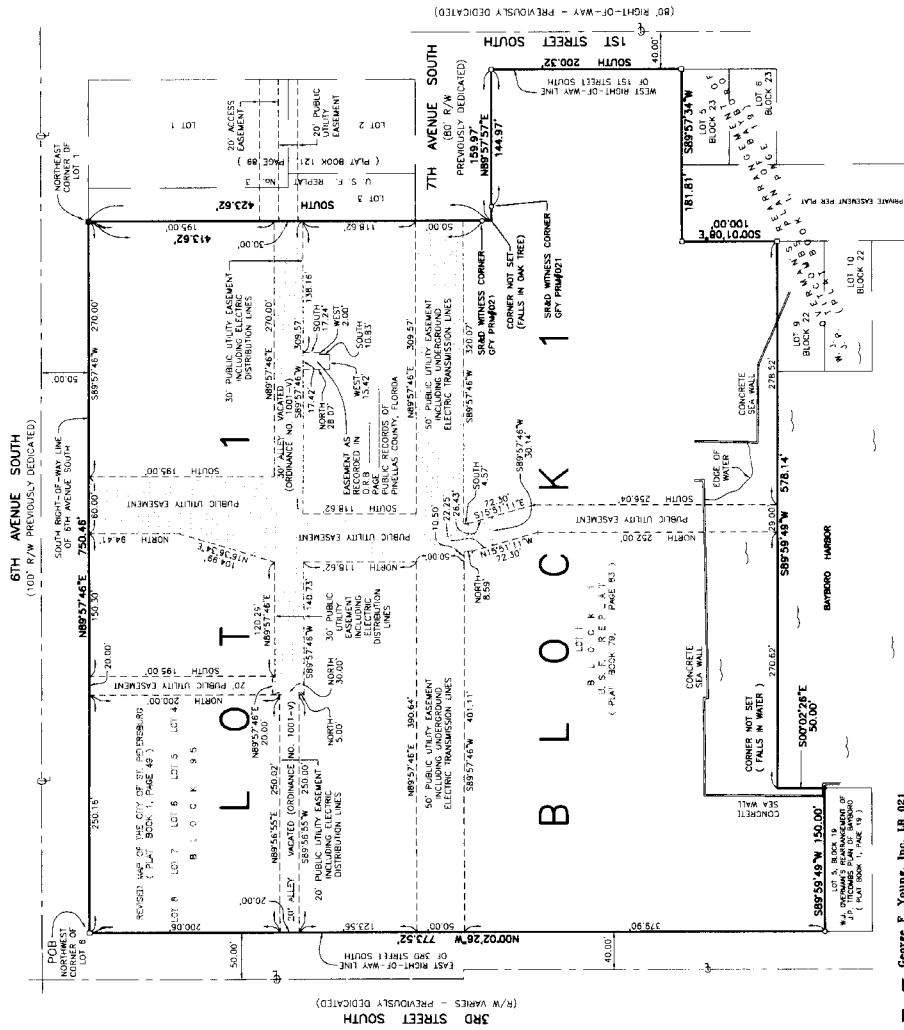


- NOTES:**
1. Beams of bearings in 1897-98's along the South Right-of-Way of 7th Avenue South.
 2. Right-of-Way intended to be dedicated as a public of 17'60" or more. Only the 1/4-section (12' x 28") plat of USF REPLAT NO. 4 is to be used (1" = 60"). Scale of enlargements or reductions of plat part will vary.
 3. Ordinances 1001-V recorded in Official Records of Pinellas County, Florida.

Book _____ Page _____ Public Records of Pinellas County, Florida.

- LEGEND:**
- Boundary based on Permanent Reference Monument, 5.45", "P.M. #1362"
 - Denotes set level and disc, "OPY P.M. LB21" (Unless otherwise noted)
 - Boundary set by survey monuments
 - Boundary set by monuments, "P.M. #1362"
 - ⊕ Centerline
 - ID Identification
 - LB Licensed Business
 - LS Licensed Surveyor
 - NO Number
 - ☐ O.R.B. Official Records Book
 - P.B. Plat Book
 - R/W Right of way
 - POB Point of Beginning
 - PRM Permanent Reference Monument
 - R/W Right of way

Indicates minor easement recorded in O.R.B. Page _____ Public Records of Pinellas County, Florida



George F. Young, Inc. LB 021
299 Dr. Martin Luther King Jr. Street North
St. Petersburg, Florida 33701
(727) 822-4311