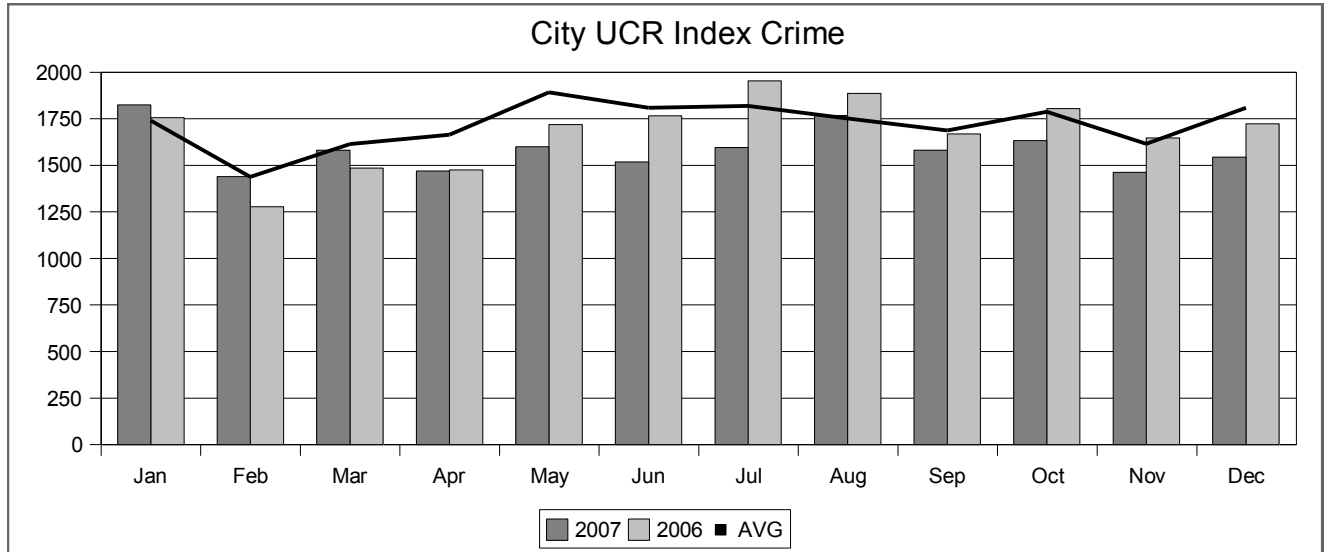




St. Petersburg Police Uniform Crime Report (UCR)
 City UCR Index Crime Year to Date Trend With 5 Year Average*

December 2007



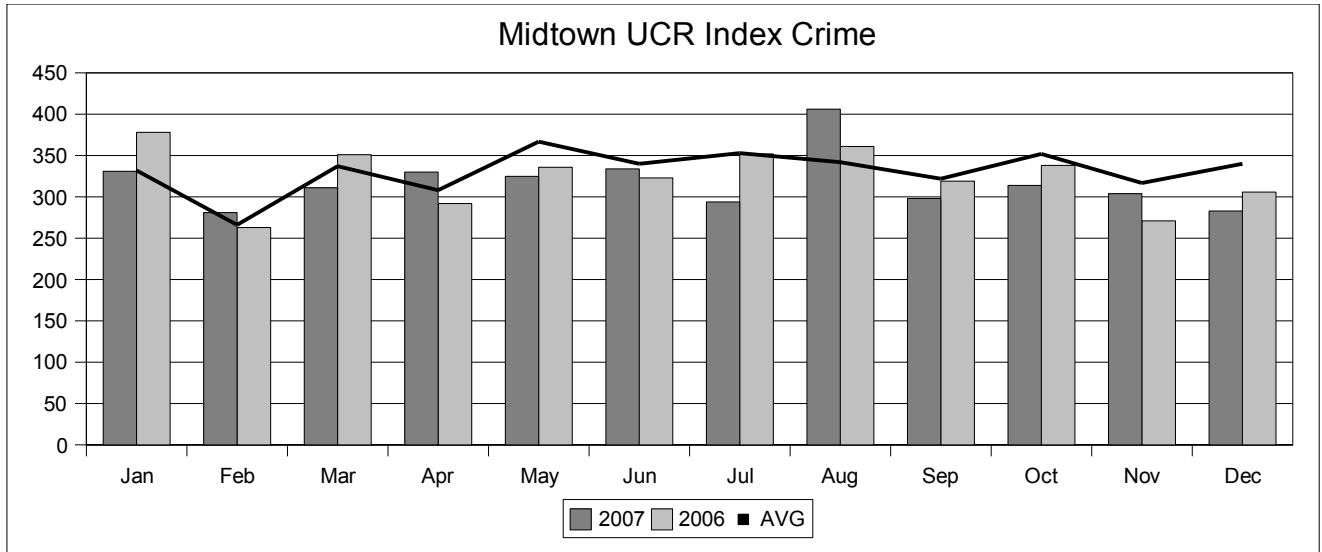
	Year	Jan	Feb	Mar	Apr	May	Jun	Jul	Aug	Sep	Oct	Nov	Dec	Annual	To Date	Yr/Yr	Trend
		2007	2	0	2	3	3	1	5	1	6	1	1	1	1	26	26
2006	2	0	1	3	4	2	5	1	0	2	0	1	1	21	21		
AVG	3	2	2	2	3	1	2	2	2	2	2	2	1	23	24	07/Avg	8.3%
Homicide	2007	37	24	37	25	23	30	28	39	41	37	32	28	381	381	07/06	10.1%
	2006	24	26	42	27	36	26	28	34	28	30	23	22	346	346		
	AVG	35	28	36	37	38	28	34	31	33	32	29	26	387	387	07/Avg	-1.6%
Forcible Sex**	2007	95	73	83	86	89	82	103	80	75	93	72	86	1017	1017	07/06	-1.5%
	2006	85	80	93	77	76	63	81	93	100	99	79	106	1032	1032		
	AVG	90	69	85	84	97	74	89	89	90	101	81	100	1050	1049	07/Avg	-3.1%
Robbery	2007	199	153	209	182	262	211	184	217	185	237	166	201	2406	2406	07/06	2.2%
	2006	198	168	236	252	196	192	193	179	209	189	151	191	2354	2354		
	AVG	214	187	215	232	247	217	230	216	217	217	192	200	2584	2584	07/Avg	-6.9%
Agg Assault	2007	333	250	331	296	377	324	320	337	307	368	271	316	3830	3830	07/06	2.1%
	2006	309	274	372	359	312	283	307	307	337	320	253	320	3753	3753		
	AVG	343	286	338	355	385	320	355	338	341	353	304	327	4044	4045	07/Avg	-5.3%
Subtotal Violent	2007	368	295	340	283	326	293	299	355	313	279	292	274	3717	3717	07/06	7.2%
	2006	308	187	222	250	249	266	296	305	333	336	349	365	3466	3466		
	AVG	303	244	271	293	316	307	310	323	335	320	303	336	3661	3661	07/Avg	1.5%
Burglary	2007	888	655	721	673	743	737	823	880	755	809	710	762	9156	9156	07/06	-10.1%
	2006	887	652	768	729	944	937	936	969	750	903	864	843	10182	10182		
	AVG	890	724	826	849	987	940	925	890	816	909	829	925	10510	10510	07/Avg	-12.9%
Larceny	2007	236	239	190	218	154	164	154	196	206	177	190	192	2316	2316	07/06	-16.1%
	2006	252	164	123	138	214	280	415	306	248	245	181	195	2761	2761		
	AVG	204	184	179	169	205	243	228	202	194	206	179	221	2415	2414	07/Avg	-4.1%
Auto Theft	2007	1492	1189	1251	1174	1223	1194	1276	1431	1274	1265	1192	1228	15189	15189	07/06	-7.4%
	2006	1447	1003	1113	1117	1407	1483	1647	1580	1331	1484	1394	1403	16409	16409		
	AVG	1397	1153	1276	1311	1508	1490	1464	1414	1346	1435	1312	1482	16586	16588	07/Avg	-8.4%
Subtotal Property	Year	Jan	Feb	Mar	Apr	May	Jun	Jul	Aug	Sep	Oct	Nov	Dec	Annual	To Date	Yr/Yr	Trend
	2007	1825	1439	1582	1470	1600	1518	1596	1768	1581	1633	1463	1544	19019	19019	07/06	-5.7%
	2006	1756	1277	1485	1476	1719	1766	1954	1887	1668	1804	1647	1723	20162	20162		
AVG	1740	1438	1614	1665	1892	1809	1819	1752	1687	1788	1616	1809	20629	20629	07/Avg	-7.8%	

* Mean of five years (2002-2006).

** In addition to Forcible Rape & Attempted Rape, Forcible Sex includes Forcible Sodomy and Fondling.



Midtown UCR Index Crime Year to Date Trend With 5 Year Average*



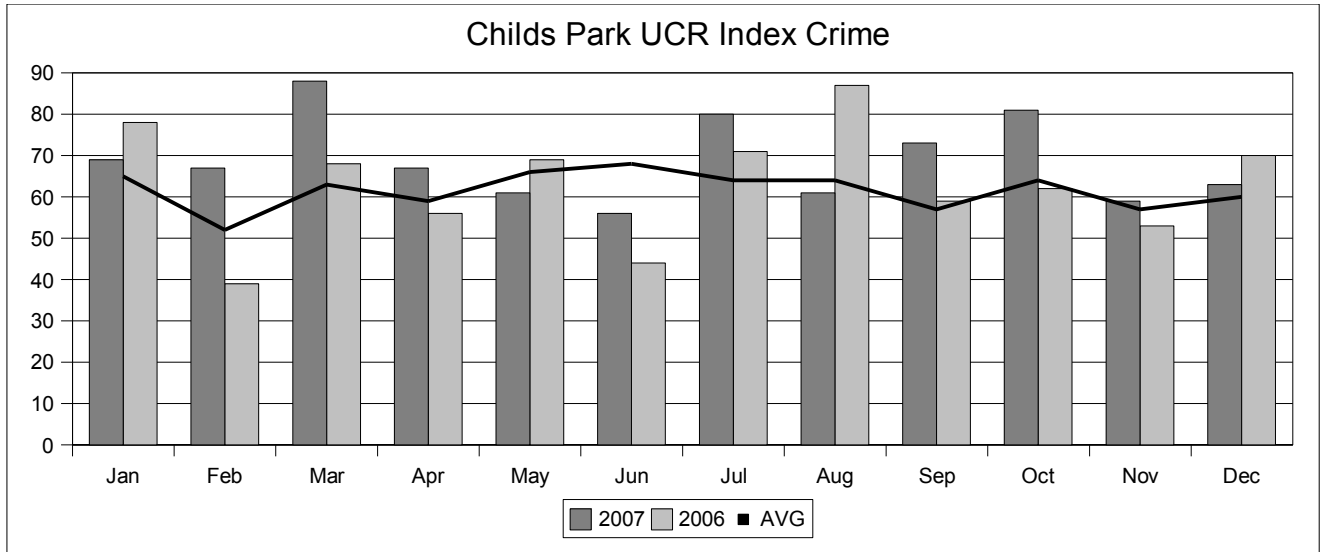
	Year	Jan	Feb	Mar	Apr	May	Jun	Jul	Aug	Sep	Oct	Nov	Dec	Annual	To Date	Yr/Yr	Trend
	Homicide	2007	0	0	1	2	1	0	2	1	3	1	0	0	11	11	07/06
	2006	1	0	0	2	2	1	3	0	0	0	0	0	9	9		
	AVG	1	1	1	1	1	0	1	1	1	1	1	0	10	10	07/Avg	10.0%
Forcible Sex**	2007	10	6	8	8	2	3	8	11	14	8	5	11	94	94	07/06	9.3%
	2006	5	6	8	7	8	8	7	11	6	7	6	7	86	86		
	AVG	8	6	9	10	10	8	8	9	7	6	7	8	95	96	07/Avg	-2.1%
Robbery	2007	31	18	23	25	26	23	18	25	10	25	8	24	256	256	07/06	4.1%
	2006	24	25	27	13	18	14	14	22	11	22	26	30	246	246		
	AVG	22	19	24	17	23	20	19	20	21	21	21	29	256	256	07/Avg	0.0%
Agg Assault	2007	64	58	77	74	92	86	62	67	63	68	53	66	830	830	07/06	-0.8%
	2006	69	51	107	81	78	68	72	64	70	66	41	70	837	837		
	AVG	77	60	85	79	98	77	82	78	74	74	70	69	922	923	07/Avg	-10.1%
Subtotal Violent	2007	105	82	109	109	121	112	90	104	90	102	66	101	1191	1191	07/06	1.1%
	2006	99	82	142	103	106	97	96	97	87	95	73	107	1178	1178		
	AVG	108	85	118	107	133	105	111	108	103	102	99	106	1283	1285	07/Avg	-7.3%
Burglary	2007	68	71	63	67	58	65	77	89	68	62	74	57	819	819	07/06	13.8%
	2006	70	42	45	57	67	55	62	86	70	57	43	66	720	720		
	AVG	61	45	54	55	68	70	64	72	69	66	55	61	741	740	07/Avg	10.7%
Larceny	2007	116	94	109	105	107	126	109	169	102	108	113	98	1356	1356	07/06	-8.4%
	2006	146	110	136	108	123	130	126	130	111	139	122	99	1480	1480		
	AVG	122	103	130	118	128	124	139	128	115	141	125	128	1500	1501	07/Avg	-9.7%
Auto Theft	2007	42	34	30	49	39	31	18	44	38	42	51	27	445	445	07/06	-13.1%
	2006	63	29	28	24	40	47	68	48	51	47	33	34	512	512		
	AVG	40	33	35	28	38	42	40	34	35	44	39	46	453	454	07/Avg	-2.0%
Subtotal Property	2007	226	199	202	221	204	222	204	302	208	212	238	182	2620	2620	07/06	-3.4%
	2006	279	181	209	189	230	232	256	264	232	243	198	199	2712	2712		
	AVG	224	181	219	201	234	235	243	234	219	250	218	235	2694	2693	07/Avg	-2.7%
Index Total	Year	Jan	Feb	Mar	Apr	May	Jun	Jul	Aug	Sep	Oct	Nov	Dec	Annual	To Date	Yr/Yr	Trend
	2007	331	281	311	330	325	334	294	406	298	314	304	283	3811	3811	07/06	-2.0%
	2006	378	263	351	292	336	323	352	361	319	338	271	306	3890	3890		
	AVG	332	266	337	308	367	340	353	342	322	352	317	340	3977	3976	07/Avg	-4.1%

* Mean of five years (2002-2006).

** In addition to Forcible Rape & Attempted Rape, Forcible Sex includes Forcible Sodomy and Fondling.



Childs Park UCR Index Crime Year to Date Trend With 5 Year Average*



Homicide	Year	Jan	Feb	Mar	Apr	May	Jun	Jul	Aug	Sep	Oct	Nov	Dec	Annual	To Date	Yr/Yr	Trend
	2007	0	0	0	1	0	0	0	0	0	2	0	0	0	3	3	07/06
2006	0	0	0	0	0	0	0	0	0	0	0	0	0	0	0		
AVG	0	0	0	0	0	0	0	0	0	0	0	1	0	2	1	07/Avg	200.0%
Forcible Sex**	2007	4	3	3	0	3	0	1	4	0	4	4	2	28	28	07/06	55.6%
	2006	2	1	1	1	1	2	2	3	0	0	2	3	18	18		
	AVG	1	1	1	2	1	2	2	1	3	1	3	1	20	19	07/Avg	47.4%
Robbery	2007	6	3	5	8	2	6	9	1	4	4	7	4	59	59	07/06	31.1%
	2006	2	4	4	4	5	1	3	5	8	3	2	4	45	45		
	AVG	4	3	3	5	4	2	3	4	5	5	3	5	47	46	07/Avg	28.3%
Agg Assault	2007	18	17	33	22	23	11	23	22	29	34	10	13	255	255	07/06	33.5%
	2006	22	11	21	17	11	15	11	25	12	22	6	18	191	191		
	AVG	17	11	18	17	17	20	14	17	15	20	14	13	195	193	07/Avg	32.1%
Subtotal Violent	2007	28	23	41	31	28	17	33	27	35	42	21	19	345	345	07/06	35.8%
	2006	26	16	26	22	17	18	16	33	20	25	10	25	254	254		
	AVG	23	16	22	24	23	24	19	23	23	26	20	19	263	262	07/Avg	31.7%
Burglary	2007	11	20	19	14	16	10	18	11	12	13	18	14	176	176	07/06	-6.4%
	2006	16	3	17	14	17	11	19	27	17	15	13	19	188	188		
	AVG	14	8	14	12	13	15	13	16	13	13	12	13	156	156	07/Avg	12.8%
Larceny	2007	19	13	22	16	12	22	20	17	13	18	11	18	201	201	07/06	-15.2%
	2006	29	18	23	17	21	13	27	25	15	14	18	17	237	237		
	AVG	22	22	22	18	22	21	24	19	15	19	18	21	244	243	07/Avg	-17.3%
Auto Theft	2007	11	11	6	6	5	7	9	6	13	8	9	12	103	103	07/06	33.8%
	2006	7	2	2	3	14	2	9	2	7	8	12	9	77	77		
	AVG	5	6	5	6	8	8	8	6	6	6	7	7	77	78	07/Avg	32.1%
Subtotal Property	2007	41	44	47	36	33	39	47	34	38	39	38	44	480	480	07/06	-4.4%
	2006	52	23	42	34	52	26	55	54	39	37	43	45	502	502		
	AVG	42	36	41	36	43	44	45	41	34	38	37	41	476	478	07/Avg	0.4%
Index Total	Year	Jan	Feb	Mar	Apr	May	Jun	Jul	Aug	Sep	Oct	Nov	Dec	Annual	To Date	Yr/Yr	Trend
	2007	69	67	88	67	61	56	80	61	73	81	59	63	825	825	07/06	9.1%
	2006	78	39	68	56	69	44	71	87	59	62	53	70	756	756		
	AVG	65	52	63	59	66	68	64	64	57	64	57	60	739	739	07/Avg	11.6%

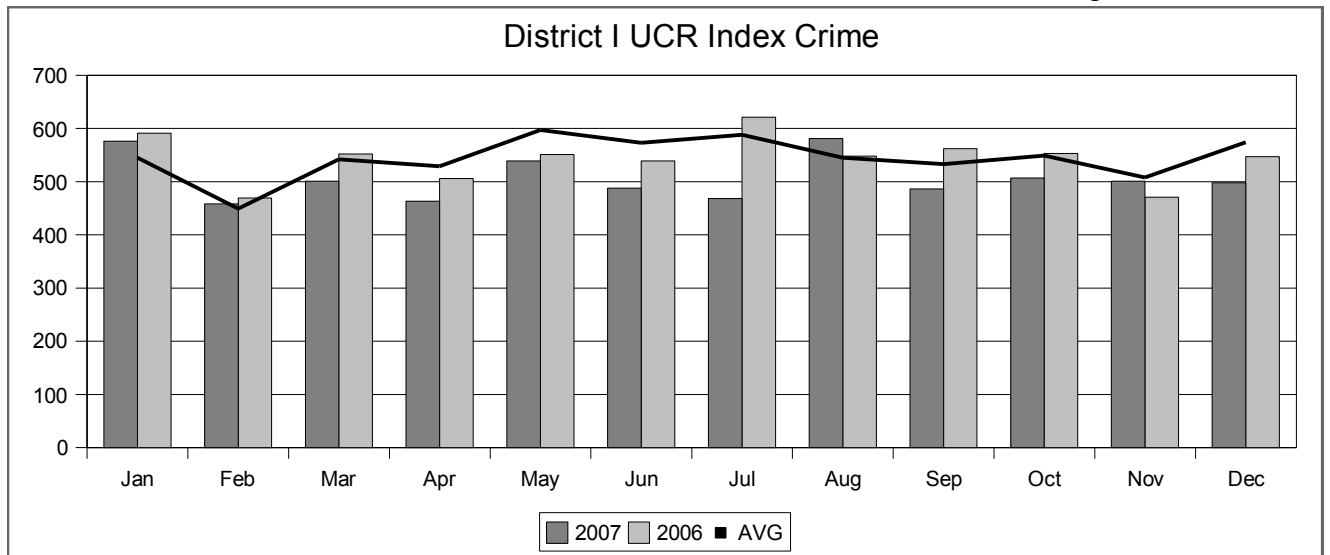
* Mean of five years (2002-2006).

** In addition to Forcible Rape & Attempted Rape, Forcible Sex includes Forcible Sodomy and Fondling.



St. Petersburg Police Uniform Crime Report (UCR)
 District I UCR Index Crime Year to Date Trend With 5 Year Average*

December 2007



Category	Year	Jan	Feb	Mar	Apr	May	Jun	Jul	Aug	Sep	Oct	Nov	Dec	Annual	To Date	Yr/Yr	Trend
Homicide	2007	0	0	1	2	1	0	2	1	3	1	0	0	11	11	07/06	10.0%
	2006	1	0	0	2	3	1	3	0	0	0	0	0	10	10		
	AVG	1	1	1	1	2	0	1	1	1	1	1	0	13	11		
Forcible Sex**	2007	13	11	14	11	7	8	8	16	19	10	10	16	143	143	07/06	4.4%
	2006	6	10	27	11	7	11	10	15	11	13	8	8	137	137		
	AVG	12	10	15	14	13	11	13	13	13	11	10	11	9	141		
Robbery	2007	41	29	34	31	29	27	24	30	24	32	16	36	353	353	07/06	5.1%
	2006	28	33	37	24	25	24	23	24	22	30	35	31	336	336		
	AVG	29	27	33	28	33	29	33	26	30	27	31	34	360	360		
Agg Assault	2007	83	73	95	82	114	98	86	96	76	85	75	82	1045	1045	07/06	1.0%
	2006	78	68	117	95	92	98	90	72	97	85	56	87	1035	1035		
	AVG	102	83	102	101	117	100	102	101	98	96	87	97	1187	1186		
Subtotal Violent	2007	137	113	144	126	151	133	120	143	122	128	101	134	1552	1552	07/06	2.2%
	2006	113	111	181	132	127	134	126	111	130	128	99	126	1518	1518		
	AVG	144	121	152	144	165	140	149	142	140	135	129	140	1700	1701		
Burglary	2007	121	111	106	92	108	103	116	126	97	98	106	102	1286	1286	07/06	4.6%
	2006	119	78	64	105	100	92	111	120	128	98	95	119	1229	1229		
	AVG	106	79	95	103	114	106	110	114	115	106	98	116	1262	1262		
Larceny	2007	230	163	188	166	224	192	184	240	198	208	218	216	2427	2427	07/06	-12.8%
	2006	267	206	251	216	243	221	247	239	197	239	231	226	2783	2783		
	AVG	222	180	227	218	245	231	251	226	203	232	218	231	2684	2684		
Auto Theft	2007	88	71	63	79	56	60	48	72	69	73	76	46	801	801	07/06	-18.3%
	2006	92	74	56	53	81	92	137	78	107	88	46	76	980	980		
	AVG	73	69	69	63	73	96	78	64	74	77	63	86	885	885		
Subtotal Property	2007	439	345	357	337	388	355	348	438	364	379	400	364	4514	4514	07/06	-9.6%
	2006	478	358	371	374	424	405	495	437	432	425	372	421	4992	4992		
	AVG	402	328	390	384	432	432	439	403	393	415	379	433	4831	4830		
Index Total	Year	Jan	Feb	Mar	Apr	May	Jun	Jul	Aug	Sep	Oct	Nov	Dec	Annual	To Date	Yr/Yr	Trend
	2007	576	458	501	463	539	488	468	581	486	507	501	498	6066	6066	07/06	-6.8%
	2006	591	469	552	506	551	539	621	548	562	553	471	547	6510	6510		
AVG	545	449	542	529	597	573	588	545	533	549	508	574	6531	6532	07/Avg		

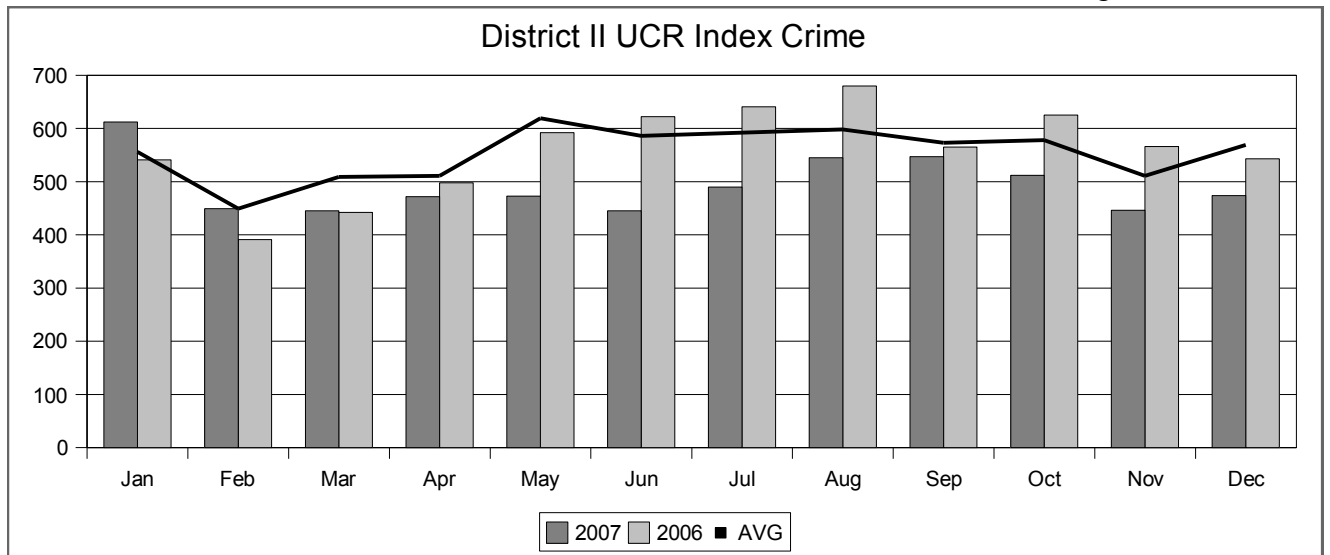
* Mean of five years (2002-2006).

** In addition to Forcible Rape & Attempted Rape, Forcible Sex includes Forcible Sodomy and Fondling.



St. Petersburg Police Uniform Crime Report (UCR)
 District II UCR Index Crime Year to Date Trend With 5 Year Average*

December 2007



Category	Year	Jan	Feb	Mar	Apr	May	Jun	Jul	Aug	Sep	Oct	Nov	Dec	Annual	To Date	Yr/Yr	Trend
Homicide	2007	0	0	0	0	0	1	3	0	1	0	1	1	7	7	07/06	40.0%
	2006	0	0	1	0	0	0	1	0	0	2	0	1	5	5		
	AVG	0	0	0	0	0	0	0	1	0	1	1	0	4	3		
Forcible Sex**	2007	11	5	12	7	8	10	7	10	13	12	12	5	112	112	07/06	0.0%
	2006	11	10	7	6	16	9	7	11	11	9	9	6	112	112		
	AVG	13	9	9	11	12	10	11	10	11	12	9	9	123	126		
Robbery	2007	22	15	15	17	17	19	32	24	21	27	22	23	254	254	07/06	-17.3%
	2006	30	24	22	29	26	14	25	27	32	28	22	28	307	307		
	AVG	31	20	24	20	28	18	24	29	23	27	24	29	298	297		
Agg Assault	2007	32	31	37	37	51	53	34	45	33	48	41	62	504	504	07/06	-12.5%
	2006	61	47	43	79	50	40	49	44	49	39	35	40	576	576		
	AVG	50	45	43	59	49	43	56	47	49	46	43	44	573	574		
Subtotal Violent	2007	65	51	64	61	76	83	76	79	68	87	76	91	877	877	07/06	-12.3%
	2006	102	81	73	114	92	63	82	82	92	78	66	75	1000	1000		
	AVG	93	74	76	90	89	70	92	86	83	86	76	82	998	997		
Burglary	2007	121	83	85	80	107	87	72	108	120	76	89	64	1092	1092	07/06	3.4%
	2006	90	60	66	74	75	98	80	82	84	126	112	109	1056	1056		
	AVG	91	79	84	85	97	102	98	110	106	100	95	107	1154	1154		
Larceny	2007	354	245	227	258	247	222	291	302	297	289	229	250	3211	3211	07/06	-16.5%
	2006	296	221	270	267	367	363	356	405	323	349	328	300	3845	3845		
	AVG	316	250	302	295	374	349	336	336	327	337	294	323	3838	3839		
Auto Theft	2007	72	70	69	73	43	53	51	56	62	60	52	69	730	730	07/06	-9.3%
	2006	53	29	33	43	58	98	123	111	66	72	60	59	805	805		
	AVG	55	46	47	41	59	65	67	65	57	55	46	57	661	660		
Subtotal Property	2007	547	398	381	411	397	362	414	466	479	425	370	383	5033	5033	07/06	-11.8%
	2006	439	310	369	384	500	559	559	598	473	547	500	468	5706	5706		
	AVG	463	375	433	421	530	516	501	511	490	492	435	487	5653	5654		
Index Total	Year	Jan	Feb	Mar	Apr	May	Jun	Jul	Aug	Sep	Oct	Nov	Dec	Annual	To Date	Yr/Yr	Trend
	2007	612	449	445	472	473	445	490	545	547	512	446	474	5910	5910	07/06	-11.9%
	2006	541	391	442	498	592	622	641	680	565	625	566	543	6706	6706		
AVG	556	449	509	511	619	586	592	598	573	578	511	569	6652	6651	07/Avg		

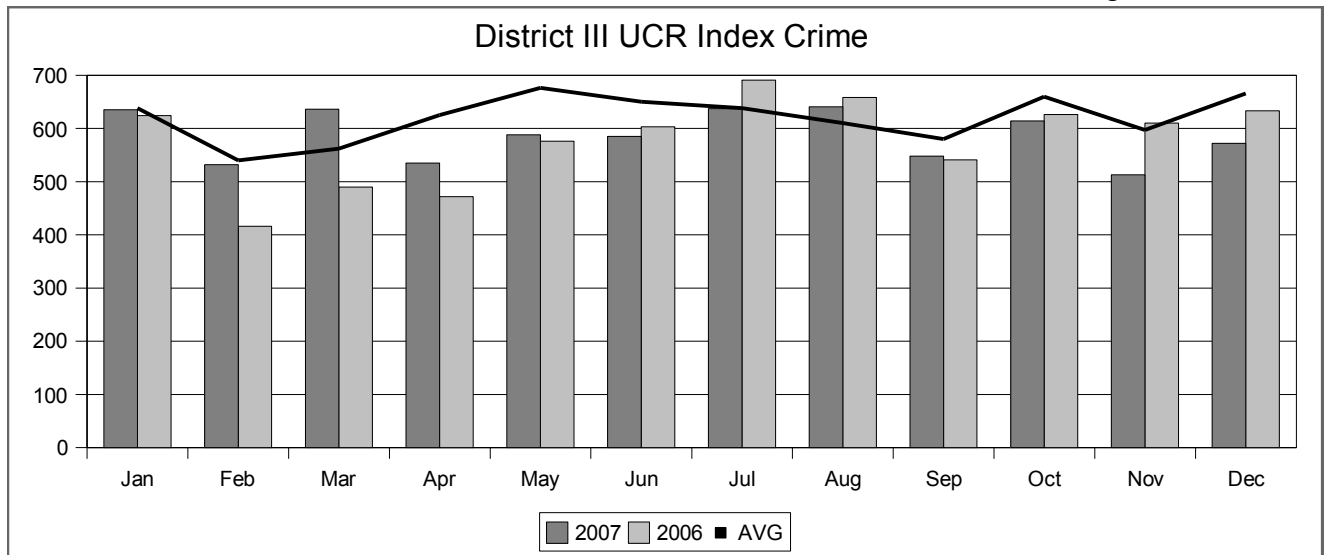
* Mean of five years (2002-2006).

** In addition to Forcible Rape & Attempted Rape, Forcible Sex includes Forcible Sodomy and Fondling.



St. Petersburg Police Uniform Crime Report (UCR)
District III UCR Index Crime Year to Date Trend With 5 Year Average*

December 2007



Category	Year	Jan	Feb	Mar	Apr	May	Jun	Jul	Aug	Sep	Oct	Nov	Dec	Annual	To Date	Yr/Yr	Trend
Homicide	2007	2	0	1	1	2	0	0	0	2	0	0	0	8	8	07/06	33.3%
	2006	1	0	0	1	1	1	1	1	0	0	0	0	6	6		
	AVG	1	1	0	0	1	0	1	1	0	0	1	0	6	6		
Forcible Sex**	2007	11	8	11	7	8	12	12	13	9	15	10	7	123	123	07/06	28.1%
	2006	7	6	7	10	13	6	11	8	6	8	6	8	96	96		
	AVG	11	10	12	12	13	7	10	9	10	11	9	8	121	122		
Robbery	2007	32	29	34	38	43	36	47	26	30	34	34	27	410	410	07/06	5.4%
	2006	27	23	34	24	25	25	33	42	46	41	22	47	389	389		
	AVG	31	22	28	36	35	27	33	33	37	46	27	37	392	392		
Agg Assault	2007	84	49	77	63	97	60	64	76	76	104	49	57	856	856	07/06	15.4%
	2006	59	53	76	78	54	54	54	62	63	65	60	64	742	742		
	AVG	63	59	69	72	81	74	71	68	70	75	62	60	824	824		
Subtotal Violent	2007	129	86	123	109	150	108	123	115	117	153	93	91	1397	1397	07/06	13.3%
	2006	94	82	117	113	93	86	99	113	115	114	88	119	1233	1233		
	AVG	106	91	110	120	130	109	115	110	117	132	99	105	1344	1344		
Burglary	2007	126	101	149	111	111	103	111	121	96	105	97	108	1339	1339	07/06	13.4%
	2006	99	49	92	71	74	76	105	103	121	112	142	137	1181	1181		
	AVG	105	86	92	105	104	99	102	99	115	114	110	113	1245	1244		
Larceny	2007	304	247	306	249	272	323	348	337	260	312	261	296	3515	3515	07/06	-1.0%
	2006	324	224	247	246	334	351	332	325	230	315	305	317	3550	3550		
	AVG	352	294	297	336	368	360	339	328	285	340	317	370	3987	3986		
Auto Theft	2007	76	98	58	66	55	51	55	68	75	44	62	77	785	785	07/06	-19.6%
	2006	107	61	34	42	75	90	155	117	75	85	75	60	976	976		
	AVG	75	70	63	64	74	82	83	73	63	74	70	78	869	869		
Subtotal Property	2007	506	446	513	426	438	477	514	526	431	461	420	481	5639	5639	07/06	-1.2%
	2006	530	334	373	359	483	517	592	545	426	512	522	514	5707	5707		
	AVG	533	449	452	505	546	541	524	500	463	528	498	561	6100	6100		
Index Total	Year	Jan	Feb	Mar	Apr	May	Jun	Jul	Aug	Sep	Oct	Nov	Dec	Annual	To Date	Yr/Yr	Trend
	2007	635	532	636	535	588	585	637	641	548	614	513	572	7036	7036	07/06	1.4%
	2006	624	416	490	472	576	603	691	658	541	626	610	633	6940	6940		
AVG	638	540	562	625	676	650	638	610	580	660	597	666	7444	7442	07/Avg		

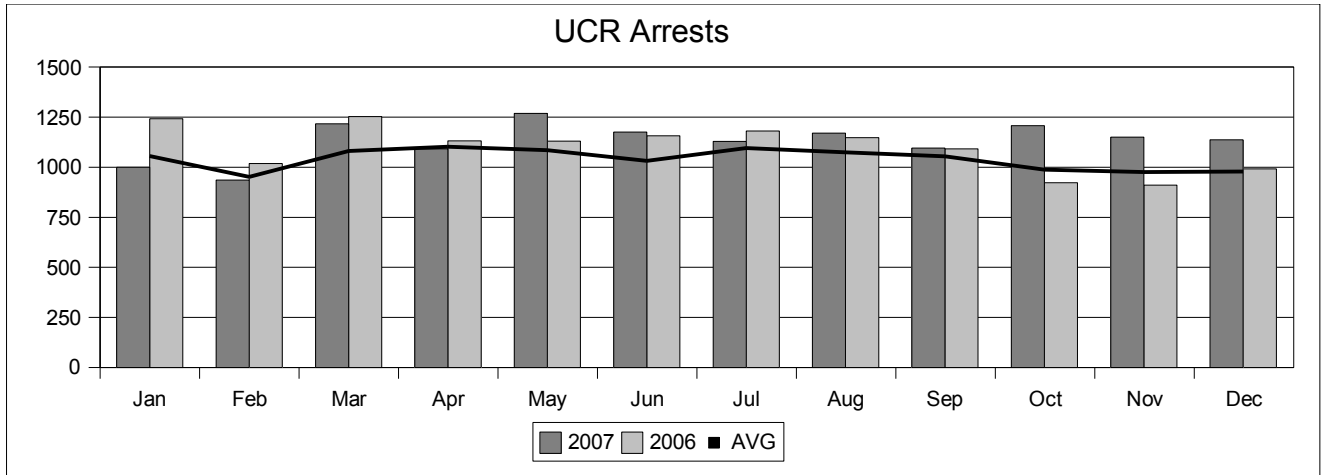
* Mean of five years (2002-2006).

** In addition to Forcible Rape & Attempted Rape, Forcible Sex includes Forcible Sodomy and Fondling.



St. Petersburg Police Uniform Crime Report (UCR)
UCR Arrests Year to Date Trend With 5 Year Average*

December 2007



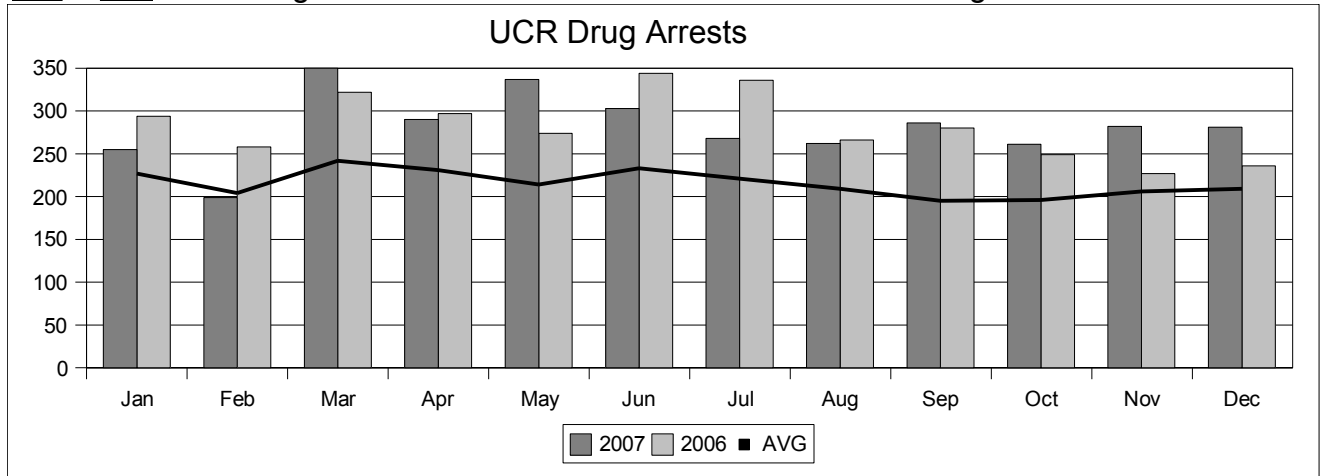
	Year	Jan	Feb	Mar	Apr	May	Jun	Jul	Aug	Sep	Oct	Nov	Dec	Annual	To Date	Yr/Yr	Trend
Murder	2007	4	0	3	1	3	1	2	0	1	0	1	0	16	16	07/06	45.5%
	2006	2	1	0	2	1	1	4	0	0	0	0	0	11	11		
	AVG	2	2	1	3	1	0	2	1	0	1	1	1	15	15		
Forcible Sex	2007	12	4	13	6	5	8	1	6	6	3	2	3	69	69	07/06	3.0%
	2006	8	6	3	4	6	5	5	8	6	7	4	5	67	67		
	AVG	8	6	6	6	7	5	7	7	6	4	6	4	72	72		
Robbery	2007	17	7	15	14	9	19	20	15	17	29	15	14	191	191	07/06	15.8%
	2006	10	13	15	14	13	13	10	14	13	20	9	21	165	165		
	AVG	14	11	14	14	20	13	16	14	18	17	13	12	175	176		
Agg Assault	2007	39	38	52	43	63	51	48	59	51	66	36	54	600	600	07/06	0.3%
	2006	55	41	64	46	62	53	47	56	62	32	35	45	598	598		
	AVG	60	46	55	59	62	55	61	59	58	50	49	49	662	663		
Burglary	2007	50	34	37	36	33	52	56	32	28	36	31	22	447	447	07/06	23.8%
	2006	46	18	32	20	28	32	24	34	31	37	29	30	361	361		
	AVG	36	23	31	32	38	37	35	29	37	36	30	33	397	397		
Larceny	2007	101	95	130	112	176	129	141	155	114	153	186	191	1683	1683	07/06	13.7%
	2006	175	98	131	121	155	129	131	99	88	85	124	144	1480	1480		
	AVG	136	119	135	132	146	125	139	122	111	117	120	150	1552	1552		
Auto Theft	2007	35	31	22	27	34	25	30	22	24	18	24	25	317	317	07/06	16.5%
	2006	33	23	13	21	27	27	30	26	17	21	16	18	272	272		
	AVG	22	25	21	21	28	23	23	20	19	16	17	18	252	253		
Index Arrests	2007	258	209	272	239	323	285	298	289	241	305	295	309	3323	3323	07/06	12.5%
	2006	329	200	258	228	292	260	251	237	217	202	217	263	2954	2954		
	AVG	277	232	264	267	302	258	281	253	249	241	235	265	3125	3124		
Other Arrests	2007	741	727	944	852	945	891	831	881	854	902	855	828	10251	10251	07/06	0.3%
	2006	913	818	995	903	838	897	930	910	875	720	694	729	10222	10222		
	AVG	779	719	817	836	782	773	814	821	806	748	740	713	9347	9348		
Total Arrests	Year	Jan	Feb	Mar	Apr	May	Jun	Jul	Aug	Sep	Oct	Nov	Dec	Annual	To Date	Yr/Yr	Trend
	2007	999	936	1216	1091	1268	1176	1129	1170	1095	1207	1150	1137	13574	13574	07/06	3.0%
	2006	1242	1018	1253	1131	1130	1157	1181	1147	1092	922	911	992	13176	13176		
AVG	1056	951	1081	1103	1085	1031	1095	1074	1055	988	976	978	12472	12473	07/Avg		

* Mean of five years (2002-2006).



St. Petersburg Police Uniform Crime Report (UCR)
 UCR Drug Arrests Year to Date Trend With 5 Year Average*

December 2007



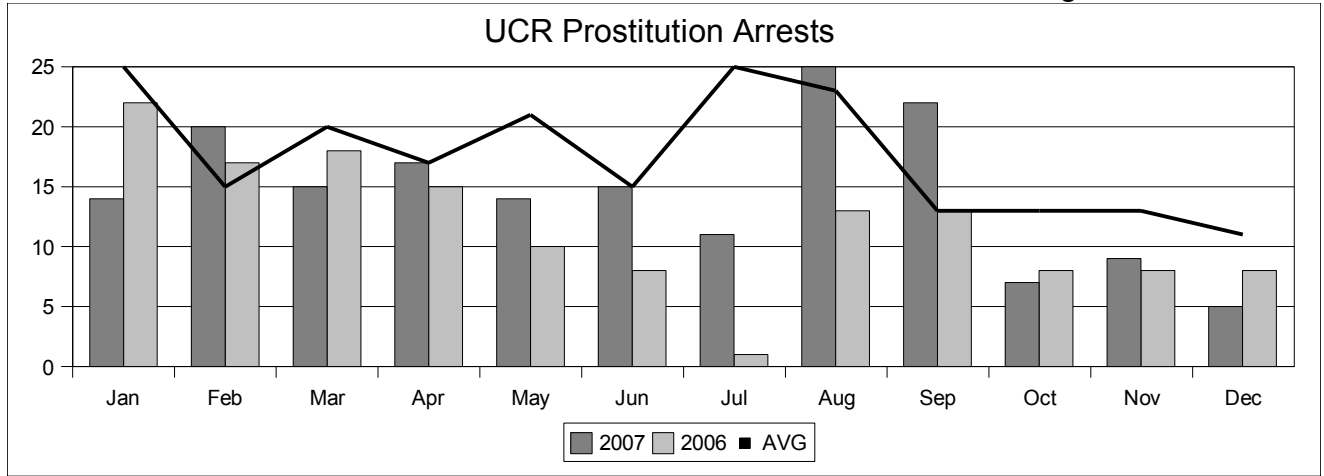
Drug Arrests	Year	Jan	Feb	Mar	Apr	May	Jun	Jul	Aug	Sep	Oct	Nov	Dec	Annual	To Date	Yr/Yr	Trend
	2007	255	199	350	290	337	303	268	262	286	261	282	281	3374	3374	07/06	-0.3%
2006	294	258	322	297	274	344	336	266	280	249	227	236	3383	3383			
AVG	227	204	242	231	214	233	221	209	195	196	206	209	2586	2586	07/Avg	30.5%	

* Mean of five years (2002-2006).

04/02/2008



UCR Prostitution Arrests Year to Date Trend With 5 Year Average*



Prostitution Arrests	Year	Jan	Feb	Mar	Apr	May	Jun	Jul	Aug	Sep	Oct	Nov	Dec	Annual	To Date	Yr/Yr	Trend
	2007		14	20	15	17	14	15	11	25	22	7	9	5	174	174	07/06
2006		22	17	18	15	10	8	1	13	13	8	8	8	141	141		
AVG		25	15	20	17	21	15	25	23	13	13	13	11	366	211	07/Avg	

* Mean of five years (2002-2006).